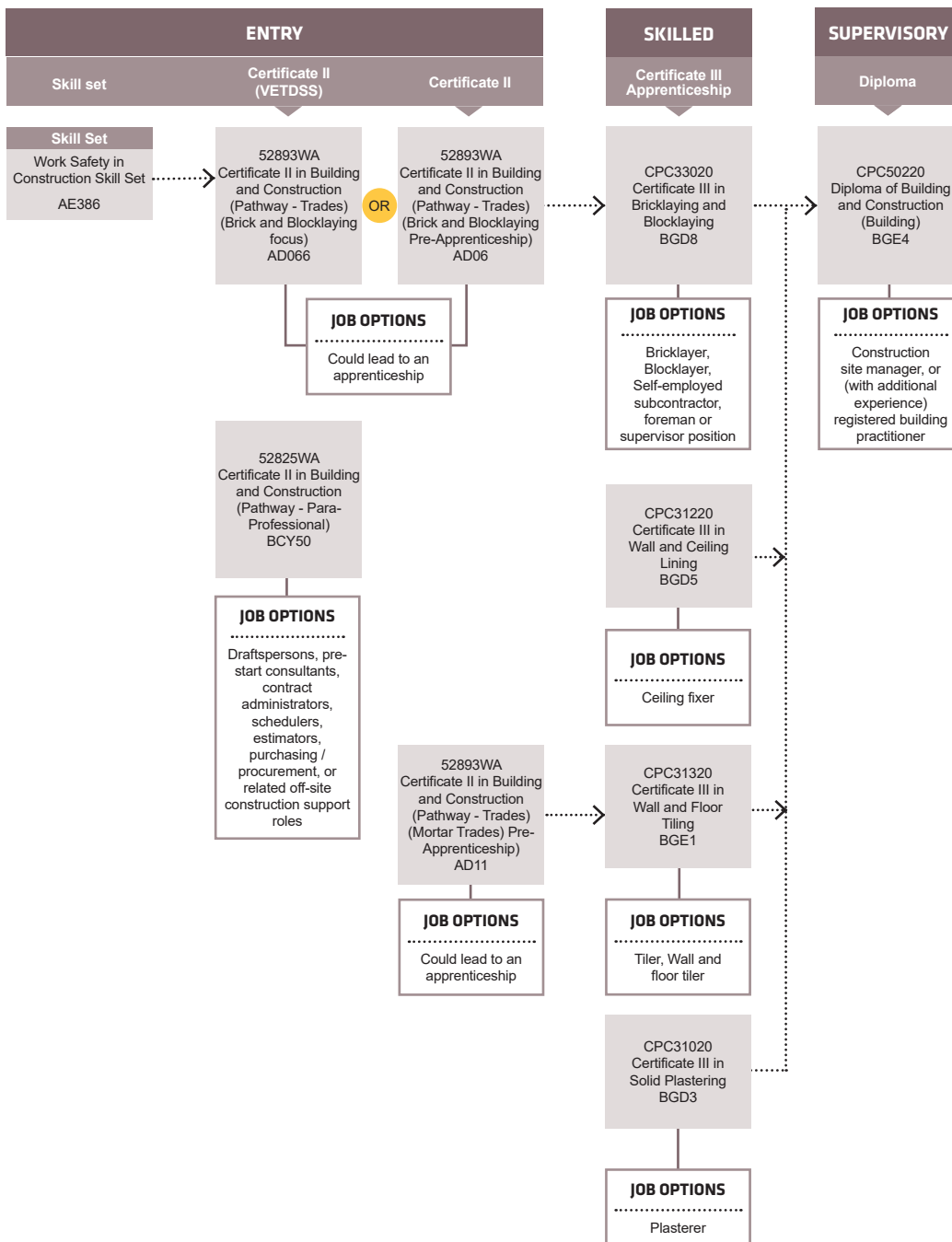




## MORTAR TRADES



1800 001 001

info@smtafe.wa.edu.au

southmetrotafe.wa.edu.au

Connect with us...    

South Metropolitan TAFE RTO: 52787

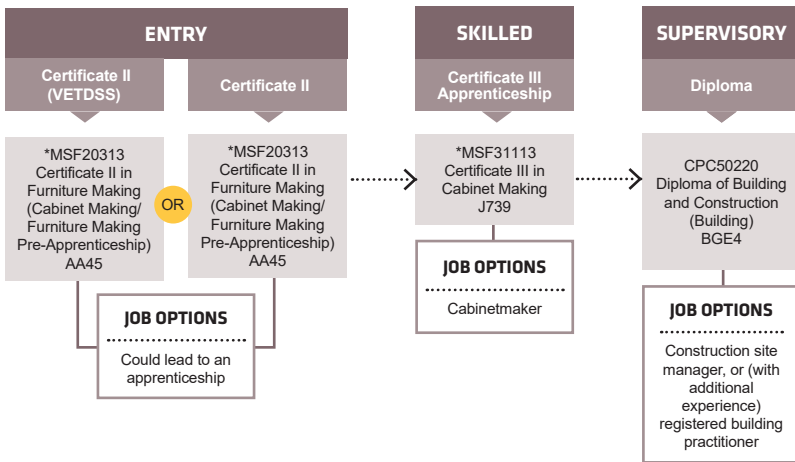
Visit your nearest TAFE Jobs and Skills Centre at Armadale, Fremantle, Mandurah, Rockingham or Thornlie campuses for advice and information on careers, training and employment. Services are free and accessible to all members of the community.

Ph: 13 64 64 Find out more about Jobs and Skills Centres at [www.jobsandskills.wa.gov.au](http://www.jobsandskills.wa.gov.au)

Connect with us...   



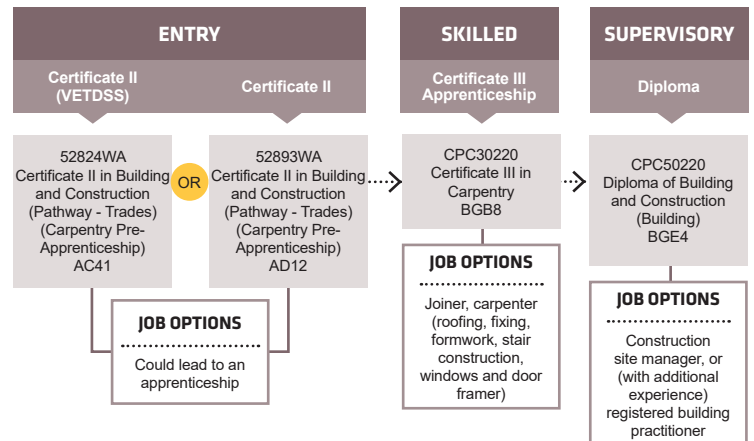
## FURNITURE



\*Please note:

These courses will transition to a new training package in 2024. This means that students starting in 2023 will transfer during their study to new units developed to meet current and future industry needs.

## CARPENTRY & JOINERY



1800 001 001

info@smtafe.wa.edu.au

southmetrotafe.wa.edu.au

Connect with us...    

South Metropolitan TAFE RTO: 52787

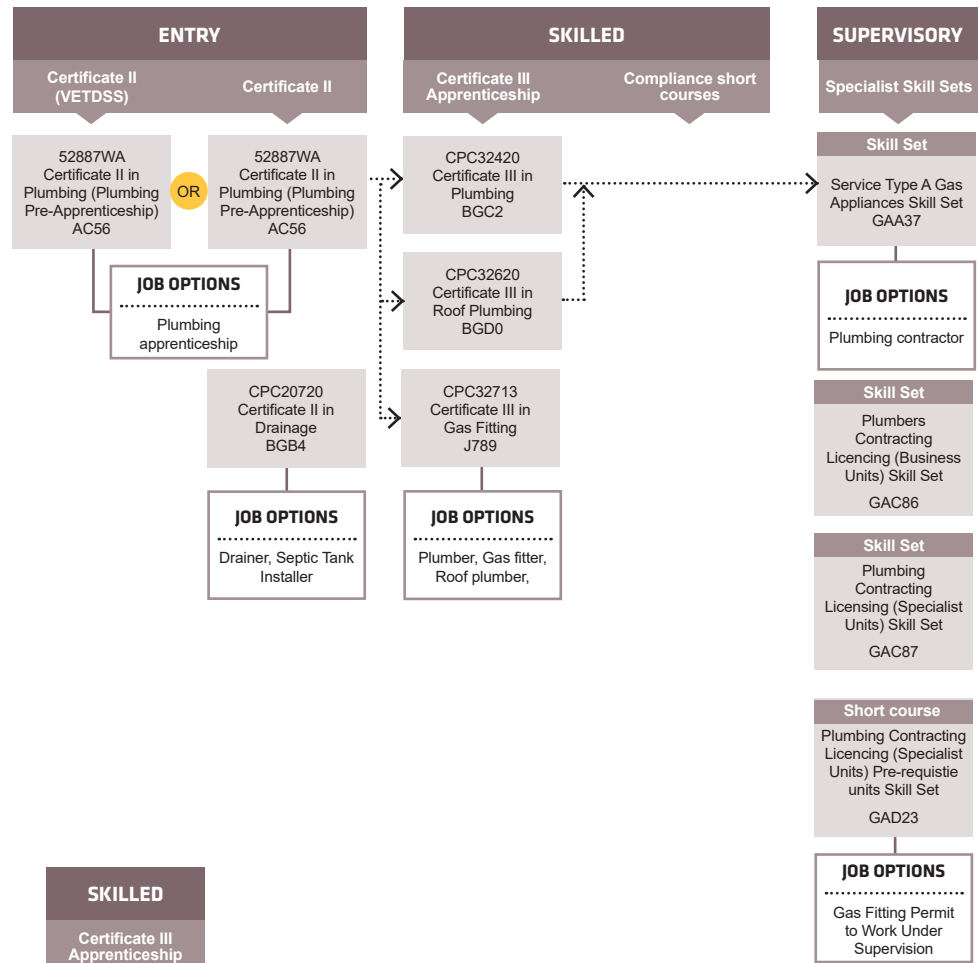
Visit your nearest TAFE Jobs and Skills Centre at Armadale, Fremantle, Mandurah, Rockingham or Thornlie campuses for advice and information on careers, training and employment. Services are free and accessible to all members of the community.

Ph: 13 64 64 Find out more about Jobs and Skills Centres at [www.jobsandskills.wa.gov.au](http://www.jobsandskills.wa.gov.au)

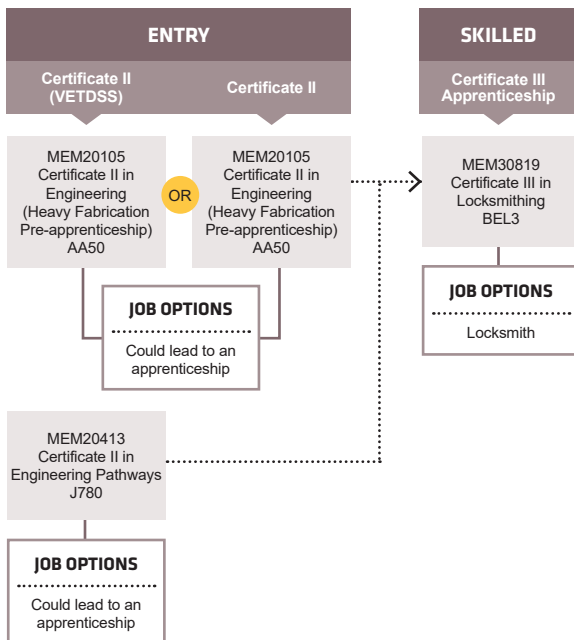
Connect with us...   



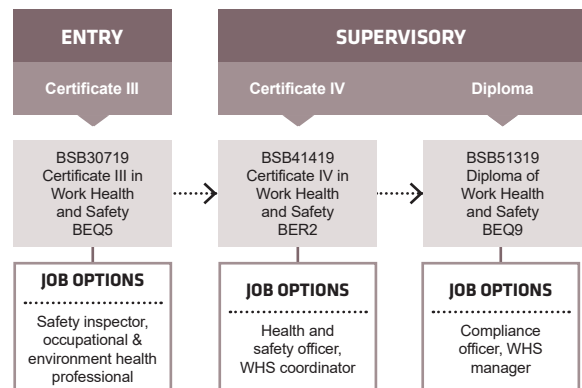
## PLUMBING AND GAS



## LOCKSMITHING



## WORK, HEALTH AND SAFETY



1800 001 001 | info@smtafe.wa.edu.au | southmetrotafe.wa.edu.au

Connect with us...

South Metropolitan TAFE RTO: 52787

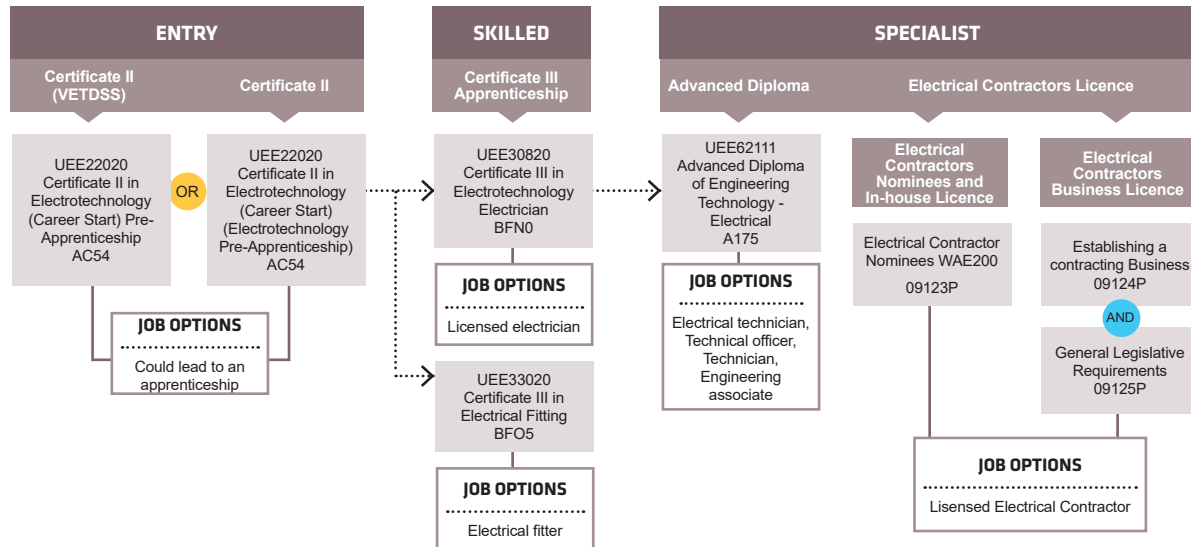
Visit your nearest TAFE Jobs and Skills Centre at Armadale, Fremantle, Mandurah, Rockingham or Thornlie campuses for advice and information on careers, training and employment. Services are free and accessible to all members of the community.

Ph: 13 64 64 Find out more about Jobs and Skills Centres at [www.jobsandskills.wa.gov.au](http://www.jobsandskills.wa.gov.au)

Connect with us...



# ELECTRICAL



1800 001 001 | info@smtafe.wa.edu.au | southmetrotafe.wa.edu.au

Connect with us...

South Metropolitan TAFE RTO: 52787

Visit your nearest TAFE Jobs and Skills Centre at Armadale, Fremantle, Mandurah, Rockingham or Thornlie campuses for advice and information on careers, training and employment. Services are free and accessible to all members of the community.

Ph: 13 64 64 Find out more about Jobs and Skills Centres at [www.jobsandskills.wa.gov.au](http://www.jobsandskills.wa.gov.au)

Connect with us...

